

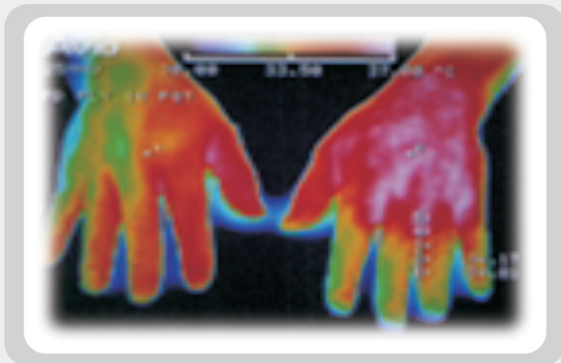


Advanced glass optics



Chalcogenide Lens

- **Description** Hanvit-optoline Co., Ltd. offers custom Chalcogenides are suitable for application due to their special properties in relation to the light including infrared transparency and modification of refractive index. Our optics engineers will support you from concept to volume production
- **Features**
 - Low cost & high productivity
 - Low lens surface roughness
 - Low aspheric form error
 - Good reliability
- **Applications**
 - IR Camera
 - Night vision
 - Thermal imaging Camera
 - Thermal sensors



Specification

Parameter	Value
Material	Chalcogenide glass
Diameter(mm)	ø3.0 ~ ø60±0.015
Center thickness	± 0.02
Decentration(mm)	± 0.005
Wedge(arcmin)	5 under
Aspheric form [P-V](μm)	0.5 under
Surface quality	80/60 under
Surface aperture	90% under

HanVitoptoline Co., Ltd.

Creating Values for Customers

970-16, Wolchul-dong, Buk-Gu, Gwangju, Korea(500-460)

TEL : +82-62-953-1720 FAX : +82-62-953-1719 E-mail : hanvit@go-hanvit.com Homepage : <http://www.go-hanvit.com>